



Switching Power Supply with Built-in Battery Back-up Circuit

SEC-1223BBM, 23 Amps

The SEC-1223BBM combines the reliability of our classic SEC-1223 power supply with the reassurance of the BBM-1225 battery backup module. This combined unit automatically provides uninterrupted DC power from an external backup battery to your critical load in the event of an AC power outage. Once AC power is restored, the SEC-1223BBM will continue to seamlessly supply DC power to the load while providing a current limited charge to the backup battery.



SEC-1223BBM



MODEL	SEC-1223BBM	SEC-1223BBM-230
INPUT	100 – 130 VAC	230 VAC
OUTPUT	13.8 VDC	13.8 VDC
AMPS	23 Amps	23 Amps
SAFETY	cUL FCC Compliant	EMI/EMC

PRODUCT FEATURES

- Advanced Switch Mode Technology
- Reliable, uninterruptible DC power source in conjunction with external Lead Acid Battery
- Efficient, compact and lightweight
- Units available preset to 120 or 230 VAC
- Safety and EMI compliant

3 YEAR WARRANTY

Rack Plates for Switching Power Supplies

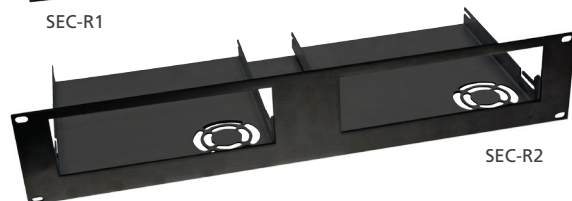
SEC-R1, SEC-R2

Compatible with all Samlex SEC Series Switching Power Supplies including:

- SEC-1212, SEC-1212CE
- SEC-1223, SEC-1223CE
- SEC-1235, SEC-1235M
- SEC-1223BBM, SEC-1223BBM-230



SEC-R1



SEC-R2

- Easily configurable, use any combination of Samlex power supplies and swap as needed
- Racks are 19", 2U

Place Your ORDER NOW

sales@samlexamerica.com

1 800 561 5885

www.samlexamerica.com